



@BeautyattheGate



/BeautyattheGate

Sep/Oct 2016

Beauty

at the gate



Spotlight on
Elemis UK
Head of
Salon & Spa
Harrison Gregory!



Workwise
Women Founders
Reveal All

New Shellac
Starstruck
Colours
Now In Salon

Elemis Biotec is Here!

8 Amazing Facials – 5 Technologies



Spa Bus Heads to Salon

01472 289 555 Open 7 days a week Monday-Friday 9:15 - 8:45 Saturday 9:15 - 5:00 Sunday 11:00 - 4:00

There is certainly never a dull moment here at BATG with so much going on all the time and the last few/next months are certainly no different.

We are about to embark on a very exciting journey with ELEMIS and the introduction of the BIOTEC range of facials. We always take a very long hard look at any new treatments before bringing them to the salon, we have to ensure they are a step forward in what we offer and that they will provide you all with the results they say they will. Even though we do follow this process it is always an interesting time when we do launch something new to see the results and how the treatments are received.

This really is not something we have to worry about with BIOTEC, apart from the fact the facials all now are clinically backed we recently had Lelia from ELEMIS working at the salon for a week showcasing the facials to clients. The results and feedback speak for themselves with comments like:

"My ELEMIS BIOTEC facial was the best facial I've ever had, my skin was noticeably smoother and plumper, even my husband noticed (which is a first) ?? I've subsequently booked a course of these treatments BATG keep doing what you are doing ??? X"

We have 3 BIOTEC machines and currently 4 of the girls are fully trained. You can read more about the facials in this issue along with getting to know a little bit more about Lelia who will be returning to the salon and Harrison Gregory, Head of ELEMIS UK Spa & Salons who has been instrumental in supporting us and in bringing this new exciting range to the salon. Customer service is very high on our own list of objectives and that carries over into the kind of service we expect from brands we want to work with and that is going to play a major factor in who we work with in the future.

We have a new Therapist in the salon, well at least a new surname for one of our girls, Jemma is now Mrs Loveland after her wedding to Oliver, a great night was had by all the girls and it was lovely catching up with Megan and her little one although their were a few sore heads the following morning

Another big night awaits the girls this month in Manchester as we head to the Professional Beauty 2016 Regional Awards, we are in the final 4 for the North East Region and again face very stiff competition from some amazing salons.

Work begins this month too on Man at the Gate, planning permission has been applied for and the space mapped out in terms of rooms etc, we are all really looking forward to seeing the finished article and how it's going to do. We will be finalizing the treatment menu over the next month or 2 and will be releasing more details as we go along.

2017 promises to be just as exciting as our last 3 years with some major changes and exciting things coming up.

Paul Beatty



Man at the Gate



A few weeks ago we had the pleasure of having ELEMIS Specialist Lelia Fiastru joining us for a week, introducing our clients to the range ELEMIS BIOTEC Facials whilst our girls were completing their training in London. We had a quick chat with Lelia to find out more about her career, BIOTEC and her ELEMIS favourites.

How did your career in beauty begin?

I started working for ELEMIS when I was studying for my Spa Management Degree at the University of Derby, going to different salons, working on the Spa Bus and at different events. Then I worked on an ELEMIS Counter as a Spa and Retail Specialist at a Spa Resort, and this year I've been offered a promotion as an Account Development Executive.

And tell us a bit about your role.

What we do is help with the development of different accounts, whatever they need us to do. Whether it is an event, a product launch or a skin lab, or just training with the therapists, whatever they need to help them develop.

At Beauty at the Gate, you have been introducing ELEMIS BIOTEC. How have you found it so far?

I think people are being very responsive to it. I love to ask people to have a look in the mirror at the end because the results are

so obvious. For example, the Line Eraser is clinically trialled so you can have visible results of reducing fine lines and wrinkles by 68% after just one facial, which is quite amazing! It is such an easy facial to do and such an easy facial to have. I have really enjoyed it being here.

What would your aftercare advice be for clients who have had a BIOTEC facial?

Definitely to book in for a course of treatments - ideally a course of 10, but Beauty at the Gate are offering an amazing launch offer on a course of six for only £290 - because it's all about re-educating the skin. So yes, you have those fantastic results from your first facial, but we want to maintain that to make sure you get the best results. It's about re-educating the skin, brightening the skin, and encouraging collagen production.

Of course, you have your consultation at the beginning and then once we've run through all of the facials we target a few main products that we recommend to help the skin and maintain the results at home. It's quite important that this is followed.

What are your favourite skincare products.

Well, I love them all! But I would say it's got to be BIOTEC now because I fell in love with how it made my skin feel. I have quite problematic

skin, it's quite hormonal, combination but can also be really dry, and since I started my BIOTEC regime it has calmed down quite a lot. I don't get oily outbreaks and I don't feel like my make-up is sliding off.

And what's your favourite treatment for relaxation?

Because I am always on my feet and on-the-go, I do love a freestyle deep tissue. Just an overall relaxation, de-stress all-in-one, my ultimate treatment.

And if you could tell BATG clients about BIOTEC, what would you like them to know?

I want them to try it, because once they look in the mirror after their first treatment, they are definitely going to be hooked. Try it, and you'll never go back. It is such a fantastic treatment with amazing results, try it!



Introducing Youngblood Mineral Cosmetics

There are so many reasons to love mineral make-up, cosmetics that not only enhance your features in a light, natural way, but give incredible coverage whilst being kind to your skin – it's no wonder they have become known as the make-up for skincare. Beauty at the Gate has been championing the benefits of mineral make-up since we opened in 2013, and now we are bringing you a fabulous brand to try.

Youngblood is an award-winning, luxury mineral cosmetics line that was established 20 years ago in California by medical aesthetician Pauline Youngblood. Pauline had experience working with plastic surgeons and dermatologists, and wanted to create a make-up collection that could be used on all skin types and conditions, including skin that has recently undergone laser treatments and chemical peels. She began working with chemists to create a loose mineral foundation that would allow skin to breathe and continue to heal, and it was so well received that the Youngblood Mineral Cosmetics line was created.

"We aim to develop the finest cosmetics to satisfy customers who have the highest standards in beauty and health", says the brand's mission statement.

"Our professional team is passionately dedicated to the people they serve and the relationships they build. We treat every employee, every client and every supplier with dignity, honesty and respect – and we seek business alliances that mirror our company values. These essential principles all contribute to our continuous circle of making a positive difference".

The collection is made from natural minerals sourced from the earth, including malachite, rhodolite, hematite and zincite. Its premium minerals are triple milled, ensuring that the

ingredients are truly fine and of the highest quality. They also contain no parabens, talc, oil or fragrance, in fact any chemicals, dyes or preservatives that may cause irritation to the skin. Not only that, but Youngblood's line is non-comedogenic, meaning that it is formulated to not clog pores.

It is these properties that makes mineral cosmetics ideal for all kinds of skin types; oily, combination, ageing, dry and sensitive, and it all began with the mineral foundation. It was designed to be lightweight, to allow skin to breathe, and to give a flawless appearance. Now, Youngblood has over 50 realistic foundation shades in many different forms, including pressed and loose powders, crème powder, liquids and moisture tints. The brand says it's "the foundation you don't need to be a professional to perfect."

Today, Youngblood's collection spans primers, mists, setting powders, contour kits, lipsticks and glosses, powder and crème blushes, bronzers and a whole selection of eye make-up. The brand prides itself on its products' staying-power; the make-up is long-lasting and can withstand heat, humidity and perspiration. In recent years, the collection has been used by celebrities not only in everyday life, but when on-set of their films and TV shows too.

Actress Jessica Alba shared the love on Instagram, showing Youngblood to be a part of her daily routine whilst getting ready to shoot one of her movies, and Pamela Anderson has even said: "I've slathered it all over my face and I look 20!" Game of Thrones and Hunger Games actress Natalie Dormer wore Youngblood cosmetics exclusively to a premier for her TV show, looking beautiful with a deep pink lip using Rosé Lipliner, Cranberry Lipstick and Guava Lipgloss.

Celebrity Spot



“ I used the mineral foundation from Youngblood cosmetics as it evens out her skin tone without smothering too much, leaving behind the radiance. ”

Cheryl Cole's X-Factor Makeup artist, Lisa Laudat

Youngblood has also been used by Cheryl Fernandez-Versini. Her make-up artist from the X-Factor, Lisa Laudat, has said: "I used the mineral foundation from Youngblood cosmetics as it evens out her skin tone without smothering too much, leaving behind the radiance",

Whilst the manager of Strictly Come Dancing's Ola Jordan has said: "She (Ola) truly loves your products, and would have no hesitation in recommending it. All her other make-up and mine will now be going in the bin, and will be replaced by your range."

This just shows the testament to Youngblood's ability to create make-up that's long-lasting and gives great camera-ready coverage.

Celebrity Spot

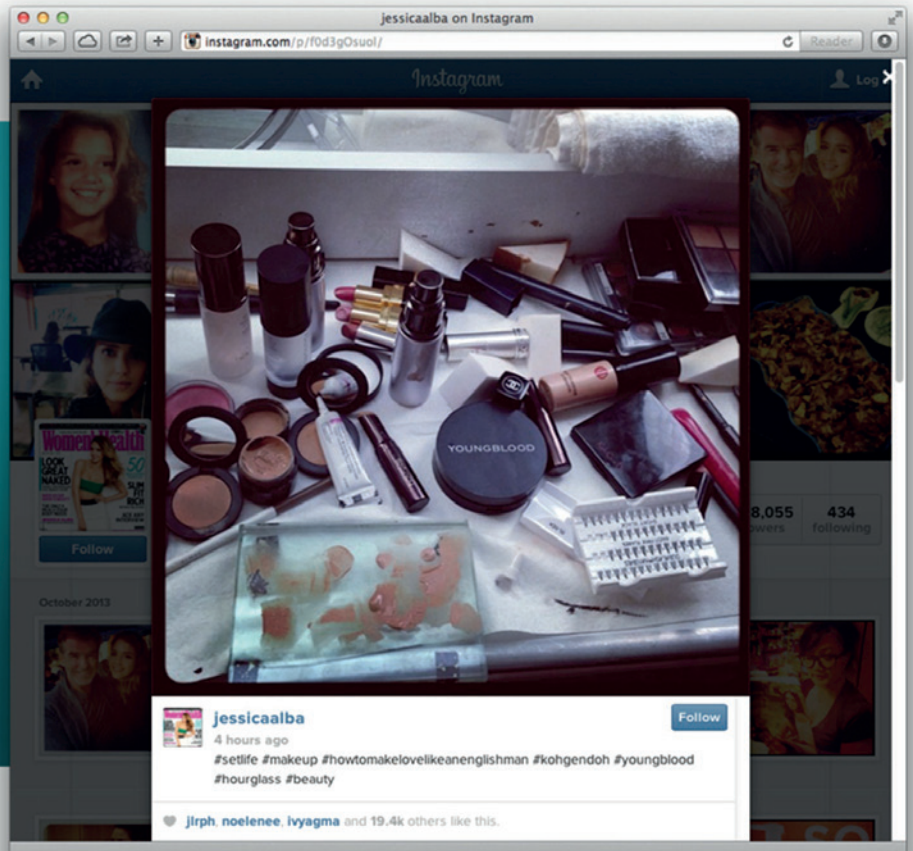


“ She (Ola) Truly loves your products, and would have no hesitation in recommending it. All her other make-up and mine will now be going in the bin, and will be replaced by your range. ”

Ola Jordan's Manager, Nicola Brunez

LIGHTS...CAMERA...ACTION!!

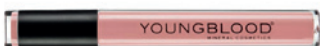
Jessica Alba has been a long-time YOUNGBLOOD Fan. On the set of her latest movie, she uses YOUNGBLOOD products as part of her daily makeup regimen. She posted this image on Instagram and Twitter today!



Here are just a few of our favourite picks...

Lipgloss in Innocence

Youngblood's lipglosses are not only long-wearing, but they contain natural oils and vitamins to care for your lips. This new pale, creamy peach shade is perfect for achieving the nude lip look.



Anti-Shine Mattifier

This product is great for helping to control areas of oily skin, absorbing excess oil and balancing the skin to leave the complexion looking more matte. It has even been featured in Harper's Bazaar!



Loose Mineral Foundation

This foundation is perfect for building a flawless base layer by layer, whether you want a light matte effect or more coverage, without leaving a glittery shimmer.



Contour Palette

Add shape and definition to your facial features and cheekbones with this contour palette. It features three shades of highlighter and three shades for contouring.



Brow Artiste

Having full, groomed brows can transform your look, and this kit contains all you need for your arches - two shades of pressed brow powder, a lightly tinted wax, a brow brush and tweezers.



If you take a look at the brand's website, you will see a host of tutorials, including how to perfect a smoky eye, how to create autumn looks for daytime and night-time, and make-up ideas for your holiday. And, if you'd like to know more about Youngblood, call in to the Salon and speak to one of our girls.

All aboard! The ELEMIS Spa Bus Comes to Town



In 2010, to celebrate 25 years of skincare and spa innovation, ELEMIS introduced a way to take its award-winning products on tour and to give its customers around the country a whole new treatment experience, the ELEMIS Spa Bus.

This traditional double-decker bus has been fully transformed into a mobile salon, complete with four cosy, relaxing treatment pods, a consultation area and a retail space where you can find starter kits for super, exclusive prices. For six years now, it has been travelling all across the UK, from T4 on the Beach and Clothes Show Live to the Hurlingham Club Polo and Ideal Home Show, giving hundreds of thousands of people little tasters of the brand's renowned spa treatments.

Now, the ELEMIS Spa Bus is making its way to North East Lincolnshire, stopping here at Beauty at the Gate on Saturday 10th September.

When you climb aboard, you're be greeted by one of four ELEMIS Spa specialists and taken to the consultation area on the lower deck for some expert advice. Then, you make your way to one of the treatment areas (complete with intelligent massage chairs) to enjoy a luxury facial or massage treatment in just 15 minutes.

You can choose a treatment from the exclusive beauty menu:

Facials:

- Plump Up & Tone, to firm and revitalise ageing skin
- Power Resurfacing, to help calm the appearance of blemishes
- Recharge & Glow, to rejuvenate and illuminate tired, dull skin

Massage:

- Hand & Arm, to relieve tension
- Spot On Power Back, to alleviate knots
- Stress Away Shoulder to Scalp, to massage away stress
- Each facial and massage has been developed to provide a taste of ELEMIS' therapies with maximum results in minimum time.

- Within the on board Spa Store, you can find some of ELEMIS' most popular products for a fraction of the usual retail price.

The ELEMIS Spa Bus is at Beauty at the Gate from 11am to 5pm on Saturday 10th September, and we have been overwhelmed with the response we've had since announcing it's arrival.

Not only do our clients get to enjoy a miniature treatment for just £15 – and go home with a goody bag with a selection of samples - but this money is fully redeemable against the new ELEMIS BIOTEC facials coming to the salon very, very soon.



This is going to be such a fun day, so make sure you've liked the Beauty at the Gate Facebook page for more updates from the day.

INTRODUCING ELEMIS BIOTEC



After weeks of planning, preparation and training, ELEMIS' brand new innovative range of energising skin care treatments has made it to Beauty at the Gate. A series of high-performance facials that are designed to rejuvenate, revitalise and recharge the skin's cells, boosting skin energy, which has been lost through everyday stresses and exposure.

ELEMIS BIOTEC minimises the appearance of visible lines, blemishes, impurities and tired complexions. There are seven facials to choose from, each targeting a specific key problem area and tailored to suit your own needs.



Blemish Control

For those with congested skin, this purifying facial - which helps to reduce breakouts and clear pores - is for you.

Following a bespoke consultation with a trained ELEMIS therapist, skin is deeply cleansed and toned, preparing it for three unique ELEMIS treatment technologies. Ultrasonic peeling is followed by steam and extraction to decongest and rebalance an oily, congested skin, and a clarifying Anti-Blemish Activator containing anti-bacterial salicylic acid, hydrating hyaluronic acid and anti-inflammatory iris extract is applied to provide powerful anti-oxidant protection, helping to soothe skin irritation.

At the heart of every BIOTEC facial is ELEMIS' Skin Lift Touch therapy, a unique hands-on therapy combining a series of unique massage techniques, which softens and prepares the skin, enabling it to receive each

technology far more effectively.

In addition, a soothing scalp massage helps to restore and rebalance energy levels and reduce stress, while blue L.E.D. light therapy technology emits energy deep into the skin's layers, creating a powerful anti-bacterial action to minimise spot forming bacteria on the skin.

The result is skin that is soothed and calmed as redness and irritation are reduced. Hydra-Active Gel Soothing Masks for the face and eyes further enhance the treatment's unique ingredients, helping to moisturise and calm the skin, before galvanic current propels the bio-active formulas deeper into the skin. The treatment is completed with the application of S.O.S Emergency Cream, which soothes and protects, helping to prevent future breakouts and congestion.

Firm-A-Lift

Lift and tone sagging, ageing skin with this highly effective firming facial, which plumps and smoothes to leave skin looking tighter and more youthful.

After your consultation, your skin is gently cleansed, exfoliated and toned to prepare it for the skin lifting properties of the Lift Effect Activator, rich in revolutionary plant stem cells, lupin and alaria esculenta seaweed. Again, ELEMIS' Skin Lift Touch therapy is a key part in softening and preparing the skin before a luxurious re-energising Amber Massage Balm is applied to stimulate specific skin responses for maximum results.

Microcurrent lifting technology pulses with arjuna extract and amber to dramatically help lift and firm the sagging jowl area, while galvanic current propels the bio-active formulas deeper into the skin. The Hydra-Active Gel Soothing Mask is applied whilst Pro-Collagen Lifting Treatment Neck & Bust helps to lift and tone the décolletage area.

In Independent Clinical Trials, the Firm-a-Lift Facial delivered incredible results:

91% said their facial contours were more lifted and sculpted

95% felt their skin was firmer

83% said their sagging jowls were visibly improved

89% felt their facial contours were firmed, lifted and shaped.



EXTRAORDINARY RESULTS AFTER
JUST ONE TREATMENT



Sensitive Skin Soother

Developed specially for irritated, inflamed and red complexions, this ultra soothing facial calms sensitivity and lowers high colour to leave skin feeling comfortable and looking more even toned.

The process begins with a consultation, and then your skin is gently cleansed and exfoliated to prepare it for healing properties of the sensitive Activator. This extra comforting formula contains frankincense and Canadian willowherb, which help reduce redness and heat in the skin, calming and restoring moisture levels.

Following the Hydra-Active Gel soothing mask is a neck and shoulder massage using Japanese Camellia Body Oil to help relax tight muscles and recharge energy levels. Then, a combination of oxygen infusion and red L.E.D. light therapy technologies help to further heal skin irritation, sealing in moisture and calming redness.

The red light wavelengths in the light therapy technology emit energy deep into the skin's layers, creating a bio-stimulatory action that increases collagen production and boosts microcirculation. This helps plump and smooth the appearance of fine lines and wrinkles, leaving skin firmer and rebalanced.

Finally, the skin is finished with Daily Redness Solution to create an even skin tone, and you are left with a complexion that has restored balance and moisture levels, and a strengthened skin structure to help protect against internal and external aggressors.

Radiance Renew

Brighten and re-energise dull, tired-looking skin with this radiance-boosting facial.

Following your consultation with your therapist, skin is deeply cleansed and toned, preparing it for the unique ELEMIS treatment technologies. Ultrasonic peeling helps to gently exfoliate skin impurities and pigmentation, whilst accelerating blood and lymphatic circulation, boosting skin radiance. And of course, ELEMIS' unique hands-on therapy is used alongside a neck and shoulder massage, combining an exclusive combination of Swedish, Balinese and Hawaiian massage techniques to de-stress and rebalance mind and body.

Key to the Sonic Skin-Radiance treatment is the brightening Radiance Activator, a powerful antidote to dull, uneven and dry skin. Rich in anti-oxidants, hyaluronic acid and peptides, it helps to plump up and tone skin,



HOW DOES IT WORK?

PHASE 1

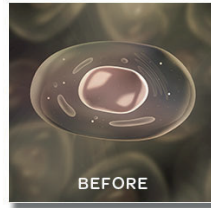
Phyto-Bioactive, Amber and a trio of acids optimise the perfect microflora of the skin, to intensively **hydrate and nourish**

PHASE 2

A potent BIO-ENERGY™ complex of encapsulated Zinc and Copper bursts on contact to **kick-start skin's natural bio-electricity** and improve skin energy



SEE THE DIFFERENCE



Depleted skin cell
UV exposure, stress, smoking, poor diet, medication and menopause can all cause the skin cell energy (ATP) to deplete. Skin can look tired, dull and slack.



Energised skin cell
BIOTEC helps kick-start cell energy and ATP synthesis to encourage the skin to perform its key functions, including repair, protection and turnover.

leaving it looking smooth, even and with a dewy luminosity. A Hydra-Active Gel Soothing Mask is applied before galvanic current propels the bio-active formulas deeper into the skin, minimising the symptoms of ageing brought on by stress and tiredness such as fine lines, dullness and blemishes.

The treatment is completed with the application of Pro-Radiance Illuminating Flash Balm, which finishes skin with a dewy glow.

Noella Gabriel, Director of Product & Treatment at ELEMIS says: "We live in a world where busy, stressful lives are the norm. Couple this with the onslaught of environmental aggressors such as pollution and UV and it's no wonder our skin looks dull and tired. The new BIOTEC Sonic Skin-Radiance Facial is the perfect antidote to the effect modern living has on our skin; a combination of two highly effective treatment technologies gives skin a boost of luminosity and radiance, leaving it looking brighter, smoother and refreshed."



"The resulting treatments combine scientific expertise, fusing a whole new technological experience... to offer something I genuinely believe delivers the best of both worlds."

Noella Gabriel
Director of product & treatment development at ELEMIS

Skin Resurfacer

This high performance facial delivers a high-tech double peel action thanks to the Resurfacing Activator, infused with concentrated lactic acid and hyaluronic acid to help boost cell turnover. ELEMIS' iconic Tri-Enzyme Peel Off Mask further helps reveal a brighter complexion, while a soothing scalp massage brings relaxing and rebalancing benefits to both mind and body.

Harnessing the power of hands-on therapy, Skin Lift TOUCH softens and prepares the skin, significantly improving functionality and enabling the skin to convert energy from each technology more effectively, whilst rebalancing its micro-flora. Three treatment technologies – ultrasonic peeling, steam and L.E.D. light therapy – help to reveal skin that is noticeably smoother and even in tone, while minimising the appearance of blemish marks and fine lines.

And this facial achieved fantastic results at Independent Clinical Trials:

- 100% felt their acne scarring was visibly reduced
- 96% said this was the most effective skin smoothing and resurfacing facial they had ever had
- 96% felt the appearance of age spots and hyper-pigmentation was visibly improved
- 87% said their skin tone looked significantly more even

Line Eraser

Smooth away fine lines and wrinkles and awaken tired, dull skin with the anti-ageing benefits of this rejuvenating facial. In Independent Clinical Trials, there was a 68% reduction in depth of fine lines and wrinkles and a 95% increase of skin firmness and elasticity measured after just one treatment!

Following your consultation, skin is gently cleansed, exfoliated and toned to prepare it for the skin-renewing properties of the Lines & Wrinkles Activator, an intense complex of tripeptides, African birch bark,

padina pavonica and omega 3 and 6. Hydra-Active Gel Soothing Masks help to moisturise and calm the skin, while a luxurious re-energising Amber Massage Balm stimulates specific skin responses for maximum results.

The trio of treatment technologies begins with a low intensity microcurrent, which stimulates and strengthens muscle memory to lift and firm up skin. L.E.D. light therapy and oxygen infusion technologies then help plump up and smooth away visible fine lines and wrinkles, leaving skin looking refreshed, radiant and healthy. Once again, ELEMIS' unique Skin Lift Touch therapy softens and prepares the skin, enabling it to receive each technology more effectively.

The Independent Clinical Trials found:

100% would delay surgery and/or botox following a course of facials

100% felt there was a dramatic reduction in fine lines and wrinkles

92% said their skin was more hydrated and moisturised

Anti-Pigment Brightener

Those that have uneven skin tone, age spots, discoloration or a lack of radiance can find a solution in this brightening facial treatment, which tackles these areas with a dynamic combination of brightening actives, an ultrasonic peel, and light therapy.

After your consultation with one of our therapists, and skin preparation through cleansing, exfoliation and toning, a unique complex of brightening actives, ultrasonic peel and light therapy is combined with ELEMIS' own precision massage to help wash out melanin and reduce dullness. A refreshing peel-off mask of Vitamin C and Daisy extract reduces pigmentation, while mineral-rich Sea Algae intensely moisturises.

The result is a complexion that is brightened and illuminated, with skin that is translucently clear and more even. The appearance of age spots, discolourations and irregular pigmentation is reduced as well as oily shine and visible pores, while the skin becomes much more hydrated and softer to the touch. And what's more, this treatment treats neck, décolleté, hands and arms too.

And, coming soon to Man at the Gate...

Super-Charge Facial for Men

Recharge and rejuvenate tired-looking skin with this energising facial, created specifically for men's skincare needs.

Following a lifestyle consultation with your therapist, skin is deeply cleansed and toned, preparing it for three unique treatment technologies. Ultrasonic peeling is followed by steam and extraction to decongest clogged pores and remove impurities, preparing the skin for the powerful properties of the men's Activator, a complex formulation rich in kalpariane and salicornia to help firm, anti-age and hydrate.

A Hydra-Active Gel soothing mask is applied to further enhance the activator's unique ingredients, helping to moisturise and calm the skin, while galvanic rollers and oxygen infusion technologies target the skin's deeper layers, enhancing the performance of the products used. In addition, ELEMIS' Post Shave Recovery Mask helps reduce any redness or irritation.

Of course, ELEMIS' unique skin Lift Touch therapy is incorporated using massage techniques to soften and prepare the skin, enabling it to receive each technology more effectively. Finally, a calming neck and shoulder massage helps balance the mind and body, re-energising the senses and relaxing tight muscles.

Noella Gabriel says: "ELEMIS BIOTEC combines scientific expertise and a new technological experience with the very best of our hands-on therapy. The new BIOTEC Super-Charge Facial for Men has been created specifically with men's skincare needs in mind and offers powerful re-energising results to leave skin looking recharged and rejuvenated."

Beauty at the Gate is absolutely delighted to be bringing ELEMIS BIOTEC exclusively to North East Lincolnshire with 3 machines and 4 trained therapists, these treatments are available now to book. Give us a call on 01472 289 555 to book your appointment and get your skin turned back on.



Harrison Gregory could certainly be described as a man on a mission. Charged with ensuring the ELEMIS message and ethos is driven to salons and clients throughout the UK it seems that Beauty and ELEMIS runs thick through his veins. We were lucky enough to be able to quiz Harrison on what makes him tick.

How did you get into the Beauty Industry and where have you worked besides ELEMIS?

I started at 16 years old on the Elizabeth Arden counter in Meadowhall part time whilst studying, after relocating to London for a degree in Latin and Ancient Greek I worked part time in Harrods still for Elizabeth Arden and enjoyed four happy years there – an amazing experience to serve the rich and famous in the world’s most well known beauty hall!

How long have you worked at ELEMIS?

3 years and still loving every day!

What’s the best thing about your role with the company?

Working with the biggest and best spa brand in the country in some of the world’s most beautiful spas but also with the phenomenally successful independent businesses such as BATG – small, independent and award winning.

Can you give us a rundown of what the role involves?

I manage the relationships with our largest customers, and also manage the 25 area managers on the road all over the country – I am still learning from them!

There looks to be many changes happening at ELEMIS, what are the things you are most excited about coming up?

If only I could share the amazing projects soon to launch at ELEMIS – we work three years in advance and always pioneering with new products – think oils, oils and oils next year – everyone’s best friend!

Which products can't you live without?

Skin Soothe Shave Gel holds prime place in my bathroom cabinet. This really is the best shaving product I have ever used. Pro Collagen Marine Cream is our bestselling, award winning product for a reason, it works to minimise fine lines and truly hydrate my skin.



What’s your favourite aftershave and why?

Halston for Men, I remember it launching in Harrods and I have loved it from day one.



What do you do to relax?

You really can’t beat the relaxation a spa offers, so to unwind I love going to get a relaxing massage and facial. I’m definitely in the right job!

What can't you get through the weekend without?

A Sunday roast in the countryside with my family and friends around me.

Where is your favourite holiday destination and why?

Last year I did a road trip from Milan in the north of Italy down to the Amalfi Coast. The views and scenery were breath-taking, and the food and wine was unbeatable.



If you could treat anyone to an ELEMIS treatment, who would it be and why?

It would have to be Princess Diana, an amazing woman and great loss to the country at such

a young age, and I book her in for an ELEMIS Couture Technology treatment – a blend of a decadent massage (I always choose Frangipani oil) and a results driven BIOTEC facial. The perfect combination.



There looks to be many changes happening at ELEMIS, what are the things you are most excited about coming up?

We have some really exciting and innovative new launches for next year, which we are looking forward to.

We work three years in advance and always pioneering new formula’s and technology.

The Road to Pro Beauty Salon of the Year 2017

PROFESSIONAL
beauty
REGIONAL AWARDS
2016 FINALIST

The countdown is on! It doesn't seem to long ago we were in London picking up our Pro Beauty Salon of the Year 2016 award but the journey to next years awards has already begun. On Sep the 18th the Beauty at the Gate team will be making their way to Manchester for the first ever Professional Beauty Regional Awards - the pathway to the 2017 National Awards!

This year, the awards have been separated into two stages - regionals and nationals - to not only recognise the talent, expertise and business sense of the UK's salons and spas by region, but to accommodate the growing number and increasing standards of entrants to the awards. Since launching in 1997, the Professional Beauty Awards have grown year after year to become one of the most established and influential awards for the UK beauty industry.

In the new regional heats, the salons that win their category are automatically entered into national Professional Beauty Awards for 2017, and we are so excited to see our salon in the running for Beauty Salon of the Year: North East.

Making it to the regional finals has been quite a journey. The first step is to carefully and thoroughly complete an online application, ensuring the salon meets all of the different criteria and that we showcase the quality and expertise in our treatments, our dedication to high standards of customer service and all of the exciting things that have happened at Beauty at the Gate over the past 12 months - and we have lots to talk about!

Those that are successful in this stage then have a visit from one of the judges who takes a look at all areas of the business, from marketing and retail displays to training, the quality of treatments and expertise of the therapists - even accounts! As always, the BATG girls were on top form and did us proud.

Then it's time for the judges to confer, comparing notes and tallying up scores until they have decided on a winner of the regional award and finalist of the national awards.

Beauty at the Gate is nominated alongside some incredible salons within the North East; City Retreat in Newcastle, Rejuven in Stokesley, North Yorkshire, and Saks Hair & Beauty in Northallerton, North Yorkshire. These are the salons that have stood out amongst so many, and it is an honour to be nominated alongside them - we can't wait to catch up with the teams and have a

fabulous evening!

The black tie ceremony, which is taking place on 18th September, is going to be held at the Monastery, a truly magnificent Grade II listed building in Manchester. Over 350 people will be in attendance with some of the industry's leading experts, including ELEMIS, Ink London, Katherine Daniels Cosmetics, Alumier MD, BTL Aesthetics, Megawhite, Sesderma and Heaven by Deborah Mitchell who are all sponsors. Once again, we are absolutely delighted to be representing our little village of Holton le Clay & Grimsby at this prestigious award, whatever the outcome may be.

If you're visiting us at the salon before 18th September, be sure to wish our girls the very best of luck. And if you're visiting us after the ceremony, be sure to get all the gossip from our girls!



OUR FAVOURITE AUTUMN 2016 TRENDS

Autumn is quickly approaching, which means it's time to adjust your beauty regime and embrace this season's incoming trends.

SKINCARE

Now is the time to nourish your skin, helping to repair damage caused by all of the fun you've been having in the summer months. By getting into a good cleansing and moisturising routine, you can also build up the barriers of your skin ready for the cooler months that are creeping in.

We Love: ELEMIS BIOTEC, an innovative new range of facials tailored to suit your skin type and treat your problem areas. Follow your treatment up at home with ELEMIS BIOTEC Skin Energising Cleanser and Moisturisers to encourage the skin to perform its key functions, to switch your skin back on.



BROWS

Looking back at Autumn/Winter 2016 Fashion Week catwalks, we can see that trends for brows are changing. Designers have been embracing the 'barely there' and au naturel look, or as Cosmopolitan named it, the 'Anti-Brow' – but, if you want to give this style a try, it doesn't mean your brows can't be defined, well-groomed and sculpted to your face shape!

We Love: HD Brows, because they're not just for achieving thick, full arches. If you need light, soft brows to suit your style and frame your face, then HD Brows' 7-step sculpting system can achieve this too. Your therapist will be able to find the right shape and colour for you.



LIPS

Autumn is the time to embrace darker, rich shades and this year, when it comes to make-up, it's all about warmer tones. One of our favourite looks for this season – for daytime and night – is a deep burgundy lip.



We Love: Youngblood Lipstick in Bistro, a deep plum shade from Youngblood's classic line of luxurious mineral lipsticks containing a blend of natural oils and vitamins to ensure a fresh look for hours. Line with Youngblood's Lip Liner Pencil in Pinot too for the perfect pairing.



LASHES

Another trend we spotted on the catwalks was a more natural look on the eyes, less definition to counterbalance the rich, full look on the lips. However, if you do ditch the eyeliner, you may still want some emphasis on the eye, and this can be achieved with big beautiful lashes.

We Love: LVL Lashes, an alternative to lash extensions that provides you with longer, fuller looking lashes. It is a low-maintenance and long-lasting treatment giving immediate and very visible results with minimal mascara needed – if any!

NAILS

Nail art isn't going anywhere this season! And we are loving simple, minimalist designs that look classy but so effective. As for colour, expect to see a lot of black, metallics and natural shades for your nails.

We Love: Shellac Black Pool, a deep shade of pure black with a crescent moon of the matte metallic Shellac Silver Chrome. Simply striking.





For ten years now, Lindsay Boyers and Sarah Brattan have been bringing women in business together for focused yet fun networking events in Grimsby – and that's outside of their own busy business lives! We had a quick chat to find out more about their work, who'd they'd invite to the club and what beauty products they just can't live without.

Tell us little bit about your yourselves.

Sarah: I am a Freelance Business Consultant with my own business, Business Buddy, which I started in June 2015 following a 30 year career in Banking. I decided to pursue my one true passion, supporting local businesses, raising their profile and helping them to market their products and services.

Lindsay: And I am a self-employed, full time Tax Consultant with 35 years' experience, and am also a Public Speaker and Author.

And what is Work Wise Women?

Sarah: Work Wise Women is a networking group of like minded women supporting each other in business. We meet monthly at Upstairs at Abbys for our Last Tuesday Teatime Club, and also host other events including Summer and Festive dinners. We have had some fantastic speakers over the years including celebrities like Julie Peasgood, she is a great supporter of the group.



How did Work Wise Women begin?

Sarah: We met at a business lunch and just hit it off straightaway! After discussing various networking opportunities over a coffee, we realised that there wasn't a women-only group locally so we decided to start one. That was 10 years ago now, in November 2006, and our first event was in January 2007.

Which beauty products can't you live without?

Sarah: Moisturiser, especially Eye cream and Mascara.

Lindsay: I wear mainly Jane Iredale Make up and wouldn't go as far as the front gate without it!

What is your favourite perfume?

Sarah: I'm using Origins Ginger Essence at present.

Lindsay: My favourite perfumes are by Jo Malone - I have many and love them all!



How do you like to do to relax?

Sarah: A luxury beauty treatment always works, I love yoga and walking too.

Lindsay: I am the polar opposite of Sarah in that I relax by reading (being an avid crime writers fan), theatre and shopping, and do not really like walking or the outdoor life! And I relax by painting abstract landscapes as well as playing the piano at Grade 1 (I'm a bit of a workaholic!)

What can't you get through the weekend without?

Sarah: Outdoor exercise, either walking or cycling along the seafront.

Lindsay: I can't get through the weekend without cooking some great healthy meals, catching up with good friends and spending a few hours with my own company in front of a box set chilling after a usually hectic working week!

Where is your favourite holiday destination?

Sarah: I love to travel, cruising the Mediterranean is high up there for historic places like Venice and Rome, but you can't beat the Lake District for wonderful scenery.



Lindsay: My favourite holiday destination is the Tresanton Hotel in St Mawes, Cornwall and anywhere in Italy.



If you could invite any famous person to Work Wise Women, who would it be and why?

Sarah: I would invite Deborah Meaden from Dragons Den. She could inspire us all and maybe we could persuade her to invest in one of our ladies' businesses!



Lindsay: I would invite the same as Sarah, Deborah Meaden, or the author Val McDermid as she's so down to earth. She could tell us her life story and where in life she gets all of her amazing plots from.

You can find out more about Work Wise Women and their Last Tuesday Teatime Club at workwisewomen.co.uk.

Beauty at the Gate Price List

3D Lipo Cavitation + Skin Treatment

Single Session Large Area	£110.00
Course of 6 Sessions	£500.00
Single Session Medium Area	£70.00
Course of 6 Sessions	£320.00

3D Cryolipolysis (Fat Freezing)

Single Area	£100.00
2 Areas	£150.00

3D Radio Frequency

Single Session	£60.00
Course of 6 Sessions	£270.00

3D Dermology

Single Session	£60.00
Course of 6 Sessions	£270.00

Pay as You Go Available on all 3D
Treatments

Facials by Samantha Beatty

The Facial 90 mins	£65.00
.....	or £75.00 with Samantha
The Advanced Acne Facial 90 mins	£65.00
.....	or £75.00 with Samantha

Dermatude

Consultation 30 mins	£15.00
Facial 40 mins	£60.00
.....	Pay as You Go plan available

Dermalux LED PhotoTherapy

Single Session	£35.00
Single Session as Addition to any Facial	£25.00

Laser Hair Removal

Consultation 30 mins	£15.00
<i>(Redeemable against a course of 6 treatments)</i>	
Chin	£35.00
Upper Lip	£35.00
Upper Lip & chin	£60.00
Sideburns	£35.00
Neck	£35.00
Hand & Fingers	£40.00
Underarms	£50.00
½ Arm	£60.00
Full Arm	£90.00
½ Leg	£90.00
Full Leg	£150.00
Buttock Crease	£40.00
Buttocks	£75.00
Bikini	£50.00
Californian	£60.00
G-String	£70.00
Hollywood/Brazilian	£90.00
Full Leg & Bikini	£175.00

Environ Facials

Advanced Active Vitamin 80 mins ...	£64.00
Collagen Power Facial 60 mins	£64.00

A-Lift Lifting & Firming Facials

Miracle Moments 30 mins	£30.00
Angelic Ritual 50 mins	£52.00
Pure Zenergise 75 mins	£59.00
Youthful Enlightenment	£59.00
Divine Indulgence 90 mins	£69.00
Course of 10 Angelic Ritual	£420.00
.....	Pay as You Go plan available

ELEMIS BIOTEC Facials

Line Eraser 60 mins	£59.00
Firm A-Lift 60 mins	£59.00
Anti-Pigment Brightener 60 mins	£59.00
Skin Resurfacer 60 mins	£59.00
Radiance Renew 60 mins	£59.00
Blemish Control 60 mins	£59.00
Sensitive Skin Soother 60 mins	£59.00

ELEMIS Touch Facials

Skin Solutions

Superfood Pro Radiance	£49.00
Anti Blemish Mattify & Calm	£49.00
Sensitive Skin Soother	£49.00

Anti-Ageing

Pro-Collagen Defy	£49.00
Dynamic Resurfacing Facial	£49.00

ELEMIS Body Treatments

Freestyle Deep Tissue Back Massage	£27.00
Freestyle Full Body Massage	£40.00
Intensely Cleansing Salt Scrub	£34.00
Body Nectar Nourishing Wrap	£42.00
Musclese Aroma Wrap	£55.00
Cellutox Aroma Wrap	£55.00

HD Brows

Standard HD Brow Treatment 30 mins	£25.00
--	---------------

Add £2 if with Pro-Stylist)

LVL Lashes

Lift Volumise & Lengthen 55 mins ...	£40.00
--------------------------------------	---------------

Lyon Precision Waxing

Chin	£8.00
Upper Lip	£8.00
Upper Lip & Chin	£13.00
Eyebrow Shape	£12.00

Upper Lip, Eyebrows & Chin	£19.00
Underarm	£10.00
½ Arm	£12.00
Full Arm	£17.00
½ Leg	£16.00
Full Leg	£23.00
Bikini	£10.00
Full Leg & Bikini	£26.00
Californian	£17.00
Full Leg & Californian	£33.00
G-String	£22.00
Brazilian/Hollywood	£33.00

Electrolysis

15 mins	£20.00
30 mins	£30.00
45 mins	£35.00
60 mins	£40.00

Tinting

Brow	£9.00
Eyelash	£13.00
Brow & Eyelash	£17.00

Holistic Treatments

Hopi Ear Candling	£27.00
Indian Head Massage	£27.00

The Room at the Gate Nail Treatments

Gel Manicure	£28.00
Gel Pedicure	£30.00
Shellac Manicure	£22.00
Shellac Pedicure	£26.00
Zoya Organic Manicure	£23.00
Zoya Organic Pedicure	£27.00
Jessica Manicure	£22.00
Jessica Pedicure	£26.00

£2 surcharge for treatments carried out by Jemma

Nail Extras

File & Polish	£15.00
Shellac Removal	£7.00
Gel Removal	£10.00
Removal with Re-Application	£5.00
French Polish	£5.00
Effects/Glitter up to 2 Nails	£3.00
Effects Glitter more than 2 Nails	£6.00
Nail Art from	£5.00
Repairs from	£5.00
IBX Initial Treatment	£16.00
IBX Maintenance	£11.00

ELEMIS

CUTTING-EDGE TECHNOLOGY IS JUST AROUND THE CORNER...



THE UNIQUE FUSION OF ACTIVES, TOUCH & TECHNOLOGY

7 SUPER-CHARGED FACIALS. 5 TECHNOLOGIES. 1 MACHINE.

DISCOVER how the science of '5 in 1' bio-electric technology, combined with clinically proven formulations, work in perfect synergy with the skin's natural bio-electric field.

DISCOVER ELEMIS' 7 new high potency, BIOTEC Activators that deliver immediate and visible long lasting facial results:

- LINES & WRINKLES
- LIFT EFFECT
- RESURFACING
- ANTI-BLEMISH
- RADIANCE
- SENSITIVE
- TIME FOR MEN



100% of women who undertook independent clinical trials said they would delay facial surgery/botox following a course of BIOTEC facials*



ULTRASONIC PEEL



MICROCURRENT LIFT



GALVANIC REJUVENATE



LIGHT THERAPY REBALANCE



OXYGEN INFUSION

THE UNIQUE FUSION OF ACTIVES, TOUCH & TECHNOLOGY

TRIPLE-TEC ANTI-WRINKLE FACIAL

Increases skin firmness and elasticity by up to **95%***

100% of subjects felt they would postpone surgery or Botox in favour of a course of facial treatments*

EXTRAORDINARY RESULTS AFTER JUST ONE TREATMENT

REVEALING A NEW GENERATION OF FACIALS

Beauty at Gate

The Room at Gate

Opening Hours

Monday - Friday 9:15am - 8:45pm

Saturday 9:15am - 5:00pm

Sunday 11:00am - 4:00pm

We are open 7 days a week. Because we know how busy life can be. We're there for you when you need us, which is usually outside of office hours, when you're not working and the shops are closed. We know how hard it is trying to fit in some 'me' time so we offer appointments every weekday up to 8:45pm, on Saturdays to 5:00pm and we even open on Sunday between 11am and 4:00pm. Telephone: 01472 289555

